



COPPERVIEW SUITES



COPPERVIEW SUITES

Comfort, Security & Convenience

Consisting of 54 varied one-bedroom units, Copperview Suites is designed to provide a new, safe, physically accessible, and manageable living space for adult residents. A common recreation room and rooftop terrace add a feeling of community to this independent living residence. Other building features include exterior unit patios, scooter parking and built-in Mini Storage.

Copperview is conveniently located beside Canadian Tire and one block away from City transit and the Fortune Shopping Center with its many amenities. The North Shore rivers trail is a 5 min walk from Copperview's front door.

Copperview Suites located at

941 - 7th Street
Kamloops, BC

Contact

Phone: 250-574-0562

Applications can be sent to

Email: CopperviewPL@gmail.com

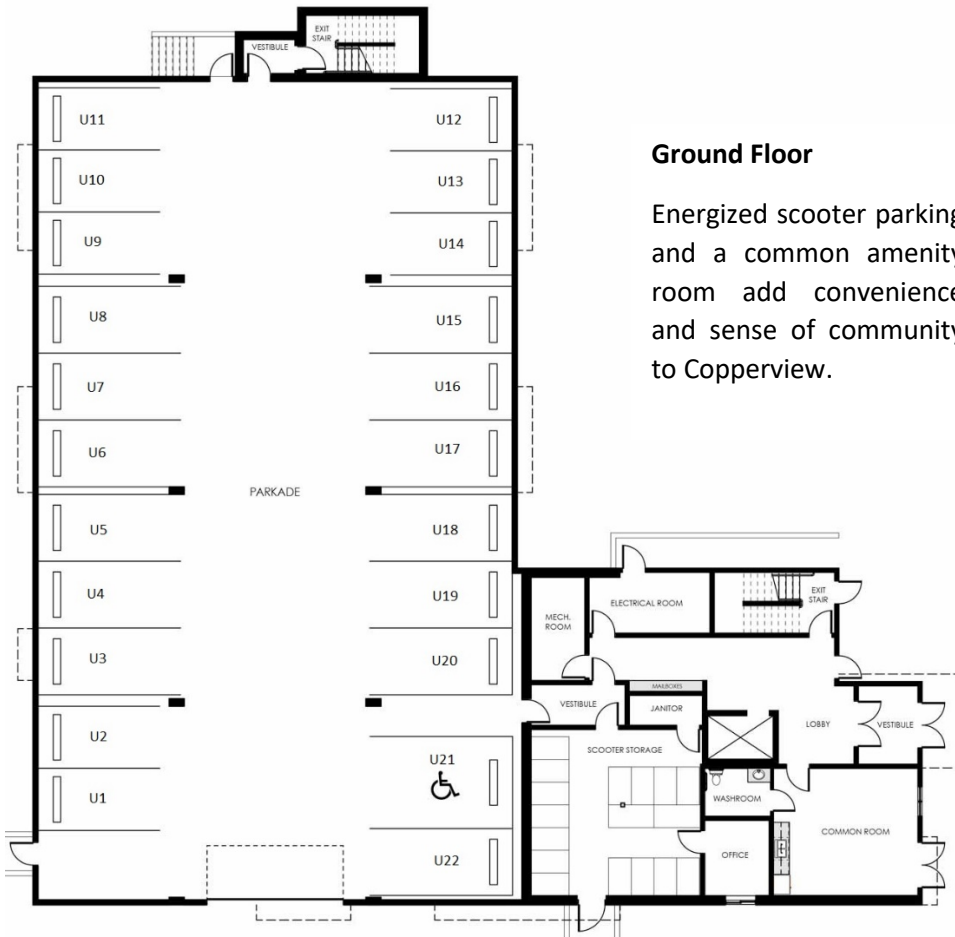
Planned completion date of

December 2021

FLOORPLANS & PARKING

Site Plan

Copperview includes pet friendly exterior spaces, in addition to ample lawn and greenery. Underbuilding and surface parking are available for those with parking needs.



Ground Floor

Energized scooter parking and a common amenity room add convenience and sense of community to Copperview.

FLOORPLANS & PARKING



Second Floor
Secure storage lockers on each floor.



Third Floor

FLOORPLANS & PARKING



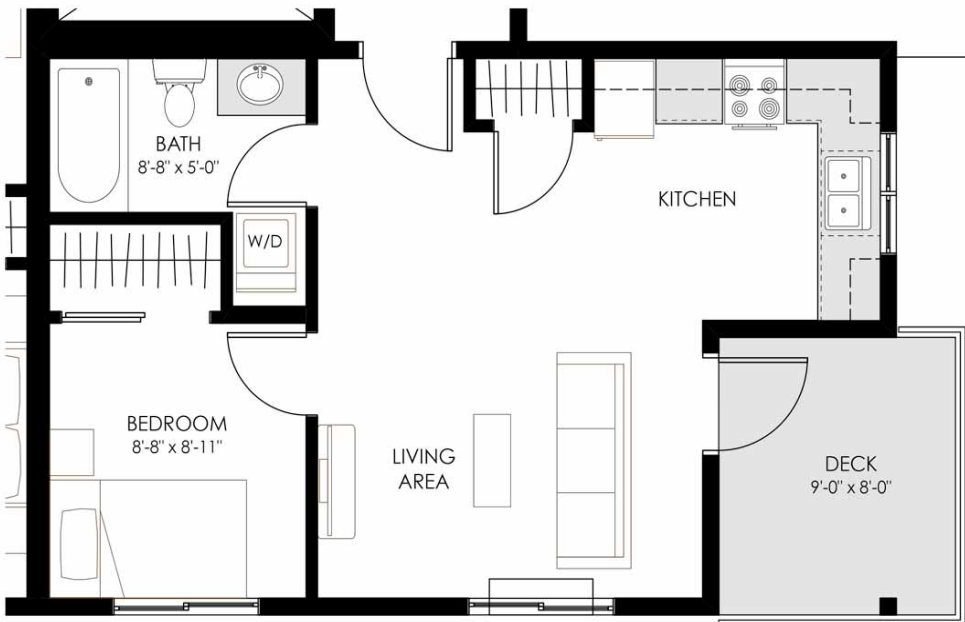
Fourth Floor



Fifth Floor

Partially covered rooftop patio garden and BBQ area provide open air comfort.

OUR SUITES



SUITE A
1-BEDROOM

Suite A

Suite A is a corner unit that offers a large living space, L shape kitchen and excellent views from its spacious deck.

- One Bedroom
- One Bath - Walk in shower
- Open Living Area
- L Shape Kitchen
- 480 Sq. Ft.



SUITE B
1-BED + DEN

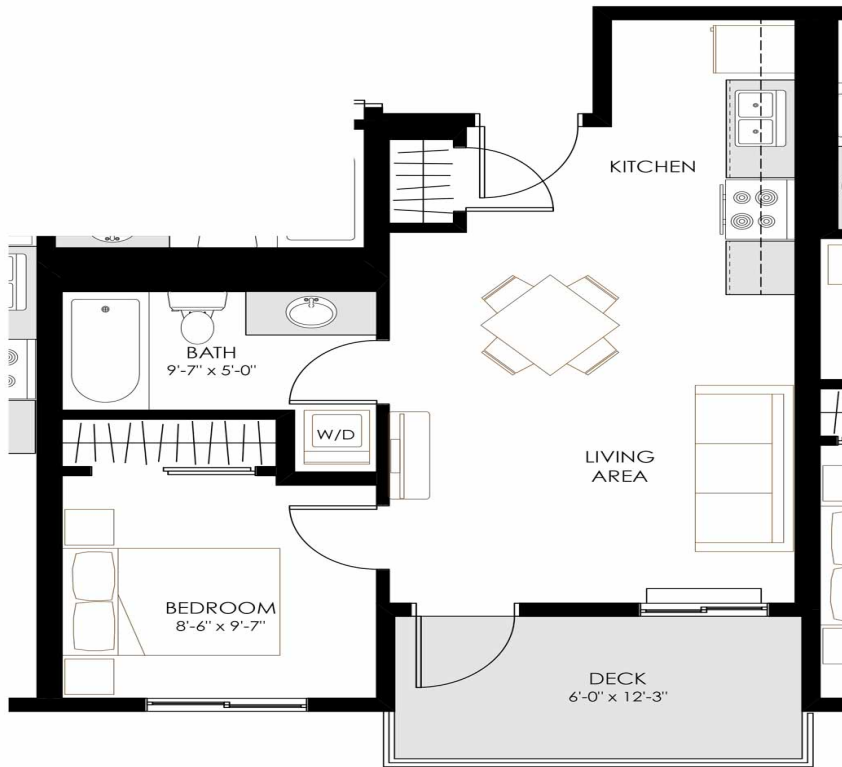
Suite B

Suite B features one bedroom and a separate den. Its large living area is open concept featuring an island-style kitchen with an overhang to accommodate seating.

- One Bedroom
- One Bath - Walk in shower
- Den
- Open Living and Dining Area
- Island Kitchen
- 634 Sq. Ft.

Learn more about the Copperview Suites complex – explore the plan of our outside and inside parking, the first floor, including lobby and common spaces, and each individual floor, including suite locations.

www.copperviewsuites.com

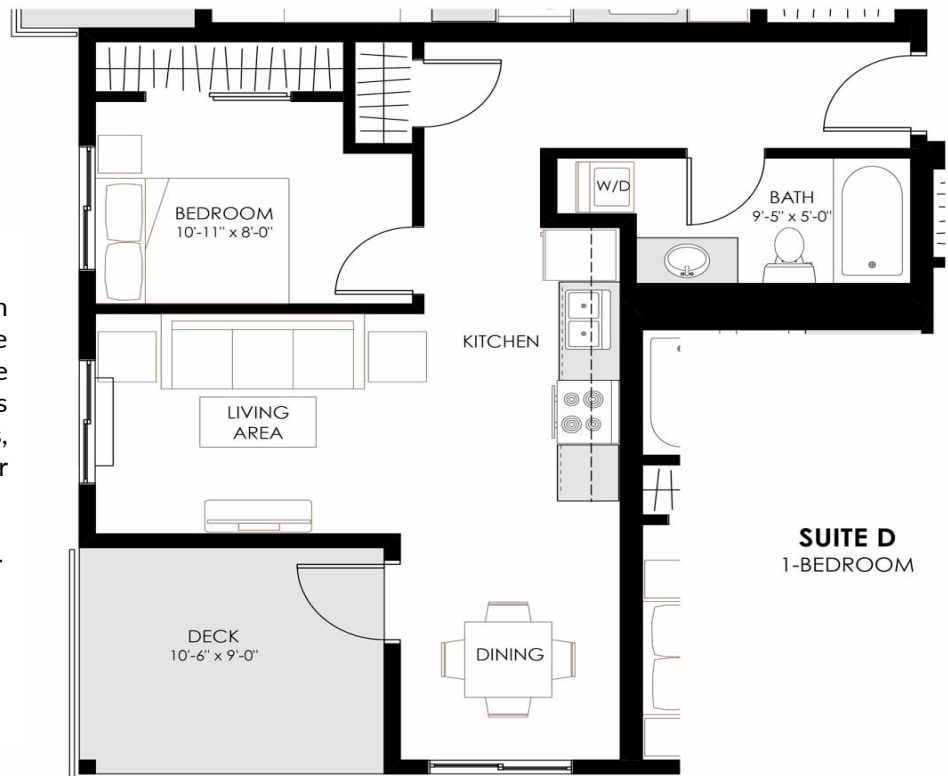


SUITE C
1-BEDROOM

Suite C

Suite C is a single bedroom suite that is brightly lit by large windows and offers ample closet space. The suite provides open concept living that extends to a spacious deck.

- One Bedroom
- One Bath – Walk in shower
- Open Living Area
- 490 Sq. Ft.



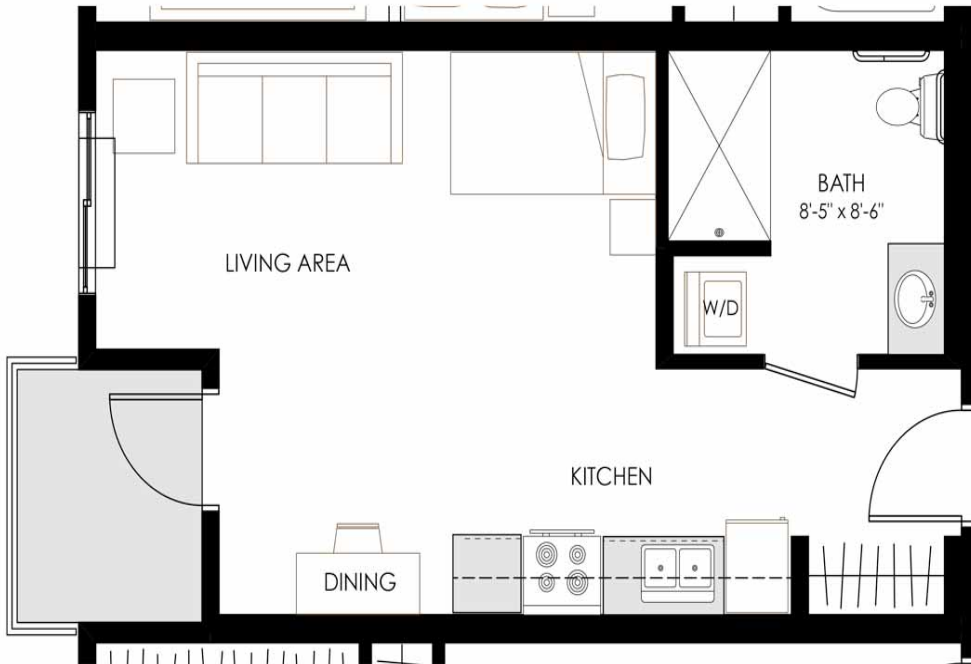
SUITE D
1-BEDROOM

Suite D

Suite D is a corner unit with defined living areas. Separate dining and living spaces are unified by the kitchen, all rooms are brightly lit by large windows, and the large corner deck further extends your living space.

- One Bedroom
- One Bath – Walk in shower
- Open Living Area
- Large corner deck
- 579 Sq. Ft.

OUR SUITES

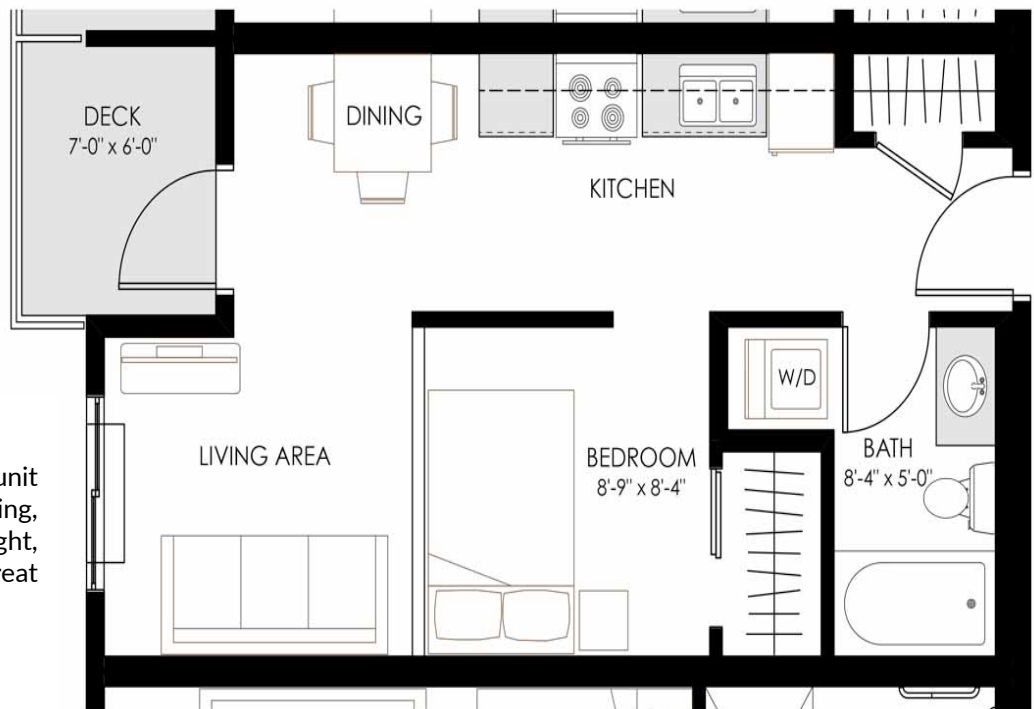


SUITE E
H/C STUDIO

Suite E

Suite E is a studio-style suite that has been designed for accessibility. The bathroom offers a wide turning radius and grab bars, while the living space itself is bright and open with a large deck.

- Studio Suite
- One Bath - Walk in Shower, Handicap Accessible



SUITE F
1-BEDROOM

Suite F

Suite F is a one-bedroom unit that is open and inviting, providing ample natural light, large closet space, and a great deck area.

- One Bedroom
- One Bath - Walk in Shower
- 434 Sq. Ft.

Frequently Asked Questions

What is included in my monthly rent?

Rent includes hot water, in-suite laundry, same-floor storage lockers, and access to amenities like the rooftop patio and outdoor grounds suitable for pet walking. Tenants are responsible to set up and pay for their own hydro and cable/internet/telephone. Parking is also extra.

Who is the cable/internet/telephone provider?

Both Shaw Cable and Telus are available in the building.

What is the parking situation?

Secure underground parking is \$75/month

Outdoor parking is \$50/month

Is there scooter storage and a charging station?

Yes, there is indoor scooter parking with charging for \$25 per month.

Are pets permitted?

Yes! One (1) cat or one (1) dog (size restrictions apply). \$250.00 pet deposit is required.

Aside from suite decks, is there any outdoor living space?

Yes! We have a large rooftop patio with a large overhang for shade, a BBQ, planters for resident use, and amazing views.

Is smoking permitted?

No. The building, its decks, and rooftop patio are all non-smoking; however, there is a designated outdoor smoking area.



Rental Application

Name:		Birthdate:	
Telephone:		Email:	
Current Address:		City:	
Landlord:		Landlord Phone:	
Reason for Leaving:			
Preferred Move-in Date:		What style of Suite do you prefer?	eg: Studio, one bdrm, one bdrm + den
Additional Occupant:		Birthdate:	
Pets: (one cat or dog under 14" permitted)	YES <input type="checkbox"/> NO <input type="checkbox"/>	Description/name	
Parking Stall? (monthly fee) Indoor (\$75/mo) Outdoor (\$50/mo)	YES <input type="checkbox"/> NO <input type="checkbox"/> Indoor <input type="checkbox"/> Outdoor <input type="checkbox"/>	Vehicle Make: Vehicle Model: Vehicle Year:	
Scooter Storage? (monthly fee \$25)	YES <input type="checkbox"/> NO <input type="checkbox"/>		
Credit Information			
Social Insurance Number:		Bank:	
Employment Status:		Employer Name:	
Other			
Have you ever had bed bugs or lived in a building that had them?	YES <input type="checkbox"/> NO <input type="checkbox"/>	When?	
Describe how treated:			

References – must provide 2			
Reference Name:		Phone:	
Relationship:			
Reference Name:		Phone:	
Relationship:			

I hereby state that the information herein is true and I authorize my Current Landlord and References as listed above to release information regarding my past/current tenancies. I also authorize a credit check to be conducted.

Signature(s): _____

Dated: _____

How did you hear about this rental opportunity? _____

